

가

**Development of Regulatory Guides on Evaluation Method for
Emergency Core Cooling System Performance**

19

가

2001-39

가

가

가

가

,

,

가

가

,

()

Abstract

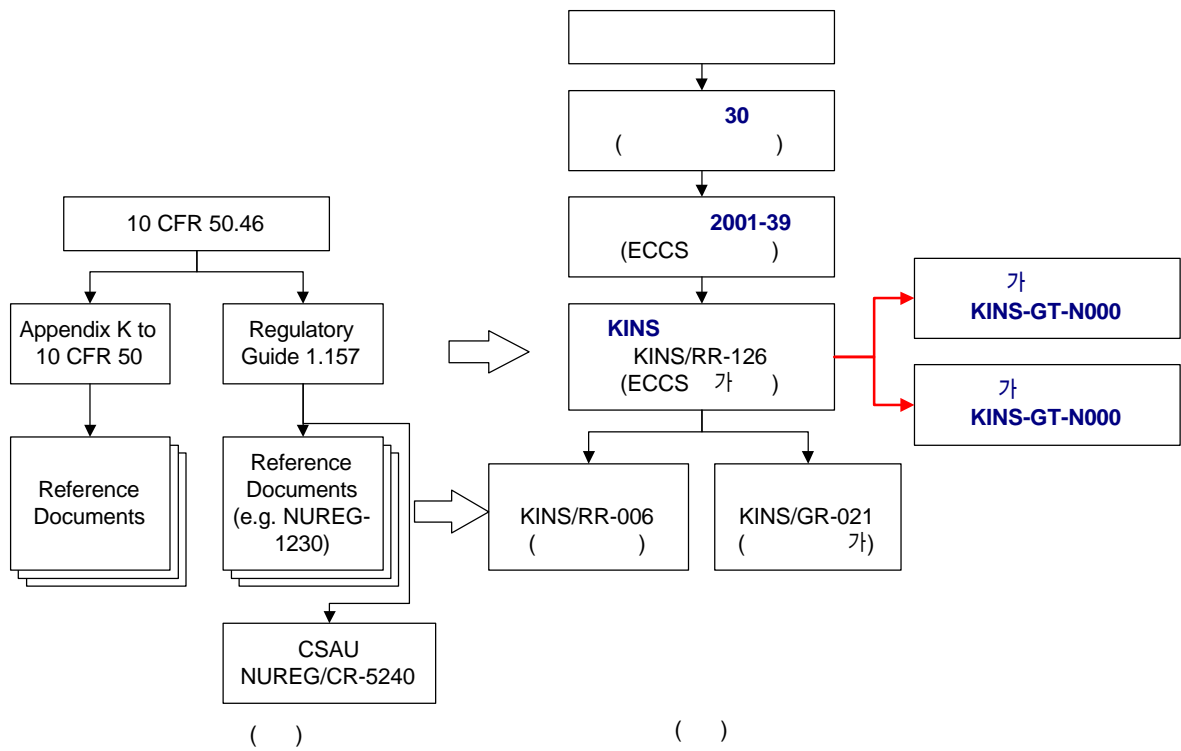
Development of the specific technical standards of the evaluation method for Emergency Core Cooling (ECCS) performance in PWR has been requested since issuance of the MOST Notice 2001-39. Korea Institute of Nuclear Safety (KINS) developed a regulatory guide on the conservative ECCS evaluation method and one on the best-estimate ECCS evaluation method based on the standards and evaluation method in USA. The issue of Direct Vessel Injection of Advanced Pressurized Reactor (APR) in Korea and the review experience including KEPRI Realistic Evaluation Method (KREM) have been fed back into the development. Comments and opinions from the experts in the industry and research were solicited and implemented into the affected regulatory guides as appropriate. Those guides will be finalized through the review of KINS committee on regulatory rule and is expected to apply to the related safety review.

1.

(ECCS, Emergency Core Cooling System)

(LOCA, Loss of Coolant Accident)

가
 , 가 가
 [1].
 , 가 가 [2]
 ,
 ,
 LOCA , KEPRI 가 [3]
 가 1987 10 CFR
 50.46 가
 2001-39 [4].
 가 10 CFR 50.46 가
 1204 5 가
 , 가 가
 2001-39 , 가



가
[5].

[5].

가 10 CFR 50 Appendix K[2]
Regulatory Guide 1.157 [6]

가
가
1

10 CFR 50 K Regulatory Guide 1.157
가

가

가

()

2.

2000

30 () “
가 , (2)
, (3)

(1)

, (4)

”

2001

2001-39

“

“가

1204 , (2)

가 ”

(1)

(3)

0.01 , (4) 가 , (5)

0.17

가

가

”가 가 가

가

”

,

,

가

(1)

가

가

(2)

가

가

가

10 CFR 50.46[7]

1

가

SECY 83-472[8]

WCOBRA-TRAC

Superbound [9]

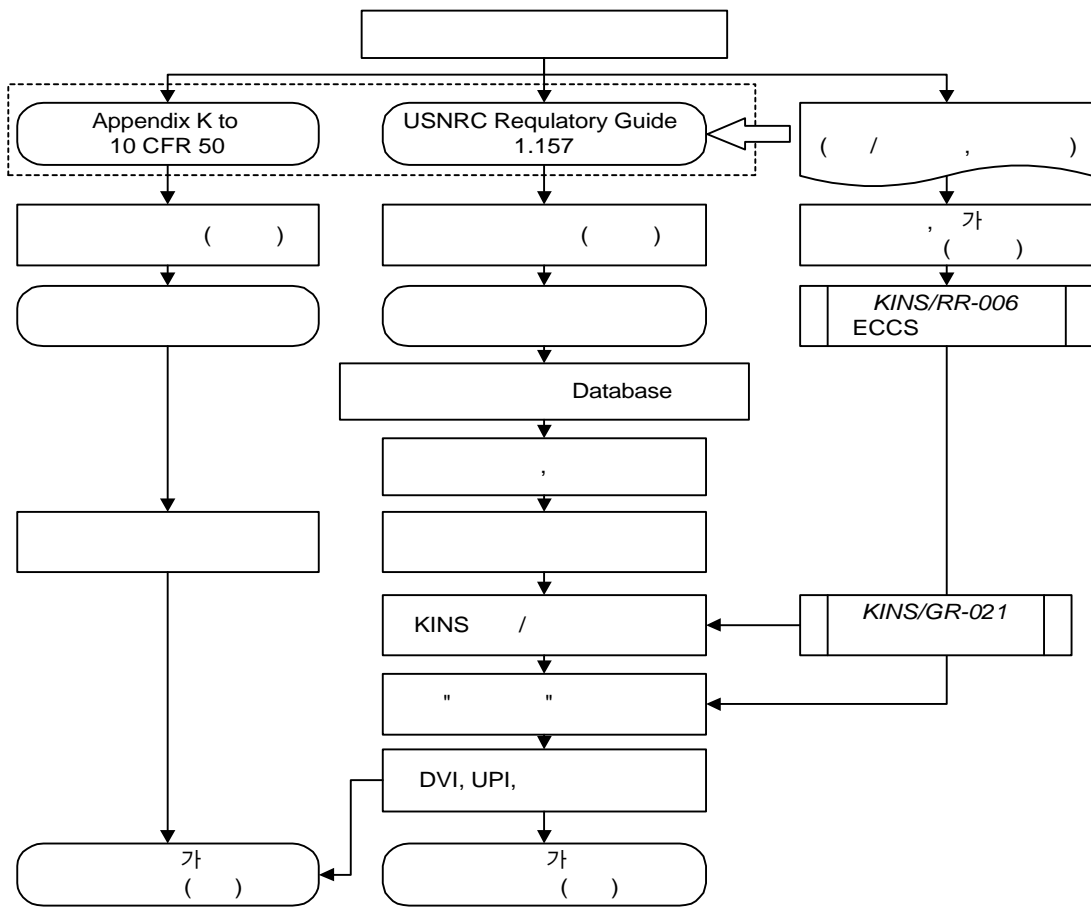
가 가

3.

2001-39

“ 가 가 ”

“ 가 ”
(1) [10]



2.

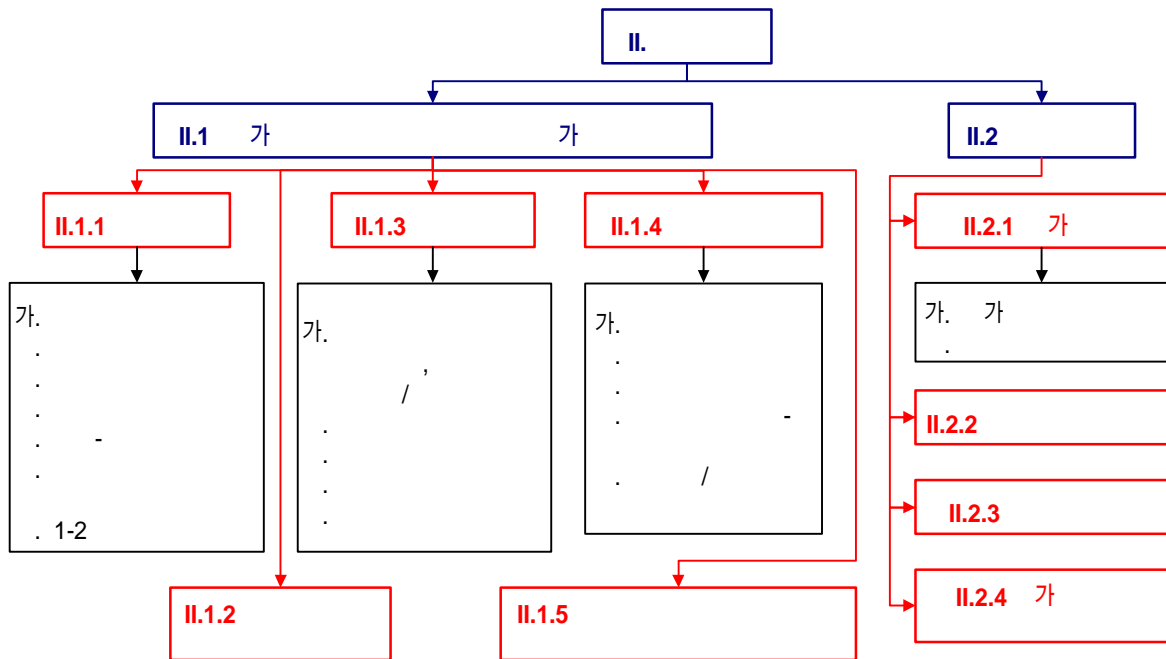
4.1

가

가 3 .1 가
 가 .2 가
 가 .1 가
 (Blowdown)

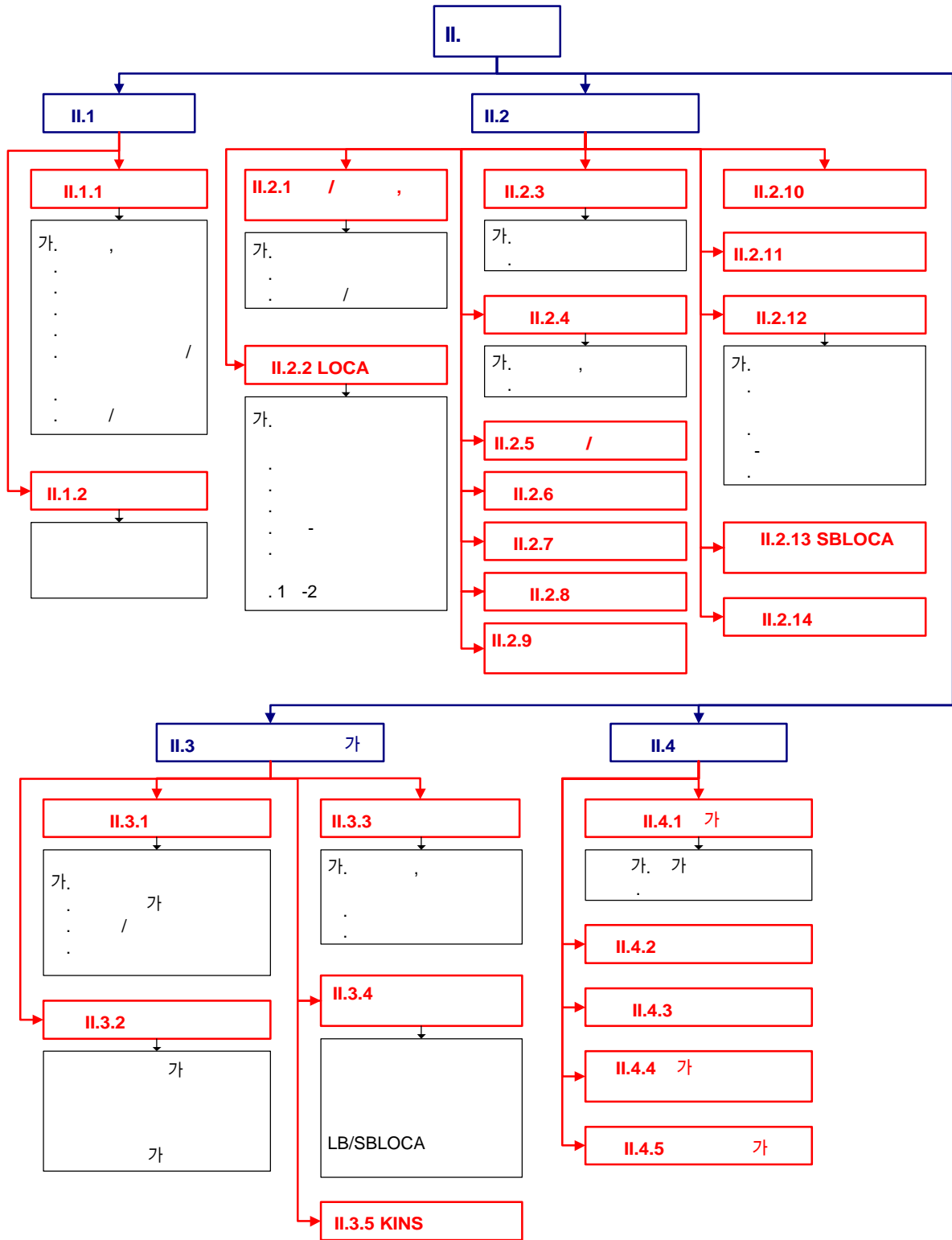
10 CFR 50 Appendix K

- (1) 가 1.02
- (2) , , ,
- 1-2
- (3) 1973 ANS 1.2
- (4) - Baker-Just
- (5)
- (6) ' , , ,
- 2 Moody ,
- (7) Baroczy, Thom, Martinelli-Nelson , 7
 , W-3, B&W-2 ,
 Groeneveld
- (8)
- (9) ,
- (10) (FLECHT)
- (11) 가 , , -



(2)

(3)



(4) 가 가

(4) ()

(1) DVI : 가 가 ECCS
가[12] , 가 () ‘II.1.4’ 가 ()
‘II.2.12’ , , - 가
“(,)
” 가 , KINS
“ ”

(2) SBLOCA : 가 SBLOCA
가 ()
가 TMI
[13] TMI
CE
가 (a) , (b)
1 , (c)
가 , (d) (Flashing) , (e)
, (f) LOFT L3-1, L3-7, Semiscale S-UT-8

(3) : 가 1.02
Appendix K 2000
. KINS

(4) Appendix K : 가 가
()

6.

가 가 가
가
, , 가 ,
() () ()
가
가

- [1] , , 2 , KINS/AR-666, 1999 4 .
- [2] United States Codes of Federal Regulation, Appendix K to 10 CFR Part 50, ECCS Evaluation Models, September 1988.
- [3] , 가 , 01- - - 539, TN-92NJ07-V001.535, 2001 11 .
- [4] 2001-39, 가 , 2001 12 .
- [5] , 가 , KINS/RR-005, 2000 3 .
- [6] USNRC, Regulatory Guide 1.157, Best Estimate Calculations of Emergency Core Cooling System Performance, December 1989.
- [7] United States Codes of Federal Regulation, Title 10 Section 50.46, Acceptance Criteria for Emergency Core Cooling Systems for Light Water Reactors, September 1988.
- [8] USNRC, SECY-83-472, Emergency Core Cooling Analysis Methods, November 1983.
- [9] L. E. Hochreiter, et al., Westinghouse large-Break LOCA Best Estimate Methodology, WCAP-10094-P-A, December 1988.
- [10] , 가 가 , KINS/RR-126, 2002 3 .
- [11] , 가 , KINS/GR-021, 1991 6 .
- [12] , 1400 , KINS/AR-790, 2002 5 .
- [13] USNRC, II.K.3.30, "Revised Small-Break Loss-of-Coolant-Accident Methods to Show Compliance with 10 CFR Part 50 Appendix K", Clarification of TMI Action Plan Requirements, NUREG-0737, Washington D.C. 1980.