

Parametric Seismic Analyses of a Nuclear Power Plant Considering Structure-Soil-Structure Interaction

Choon-Gyo Seo^{a*}, Il-Hwan Moon^a, Sanh-Pill Han^a

^a Power Engineering Research Institute, KEPCO E&C, 269 Hyoksin-ro, Gimcheon City, Gyeongbuk

*Corresponding author: seosck@kepco-enc.com

1. Introduction

The United States Nuclear Regulatory Commission (USNRC) revised the 2007 Standard Review Plan (SRP) 3.7.2 to recommend the seismic design for the structure with seismic category-I reflecting the structure-soil-structure interaction (SSSI) effect [1]. Such a demand arises from a study that the seismic response may change because the structures and structures are influenced and exchanged when the structures are adjacent to each other. Particularly, nuclear power plants (NPPs) are disposed to adjacent building complex with reactor containment building (RCB), auxiliary building (AB), turbine building (TB), complex building (CPB), emergency diesel generator building (EDGB) each other. The reactor building and the auxiliary building are constructed on a single mat foundation while the surrounding structures are separated considering the minimum earthquake clearance. The emergency diesel generator building may be also constructed by the side of AB for the operation of the system. Considering the disposed characteristics of the NPP, SSSI effect in the power block surrounding the safety related structures need to be evaluated according to SRP 3.7.2.

In the NRCDC certification project of the APR1400 NPP, which is being pursued by domestic nuclear industry, SSSI analysis is performed and applied to the structural design. The seismic response between the SSI response of each building and the emergency diesel generator building adjacent to the entire power block was directly compared and analyzed considering the SSSI effect. The analysis is performed by applying a three-dimensional finite element model. It is a result of the inevitable assumption that the structures are placed on the surface due to a problem of a large analysis time, and thus the boundary effect, which is an important variable related to the SSSI effect, is not reflected. After that, additional complementary analysis was performed, but there still existed a problem of a large analysis time and limitation of the analytical model.

HITACHI in Japan conducted SSSI analysis between a compound building and a fire water service complex, and used the input motion dependent to construction site and site characteristics. The SSI and SSSI analyses are performed considering the embedded effect of the building, and the results are compared. It is clear that there are differences in the SSSI analysis results

depending on whether or not they are embedded under ground [2].

Recent research trends in the US are accompanied by an experimental study of the nonlinear numerical analysis and the reduced model of the SSSI effect. The numerical analysis was proposed to a direct comparison of linear analysis in frequency domain and nonlinear analysis in time domain. The validity of SSSI analysis was verified through centrifugal fuse experiment [3].

Currently, the research project related with SSSI are being carried out by the industry-academy cooperation, in Korea. We are developing user convenience for CNU-KIESSI analysis program and also installing the high-speed solver engine for the large-capacity input data, and are performing various analytical verification and validation works through the centrifuge experiment for the reduced NPP model.

2. Parametric Analyses

In this paper, a lumped beam stick finite element model of nuclear island (NI) is constructed and SSSI analysis is also performed reflecting several parameters. As shown in Fig. 1, an analytical model was constructed with two virtual buildings adjacent to NI consisting of a reactor building and an auxiliary building, where the foundation of the building is embedded under the ground. The purpose of this analysis is to evaluate the influence of parameters such as mass ratio, building gap size, number of building, and whether they are embedded or not, which are important parameters of the SSSI analysis.

The site property of the analysis example is assumed to be a homogeneous halfspace corresponding to a shear wave velocity of 2000 ft/sec. The gap size between buildings is 1.0ft. The analysis was performed with CNU-KIESSI and SASSI2010 [4, 5] respectively.

Figure 2 shows the analysis results of CNU-KIESSI and SASSI 2010. It can be seen that the horizontal earthquake response agrees at the foundation of the reactor building (STR1) each other.

Figure 3, on the other hand, compares the horizontal seismic response of the STR3 building adjacent to the NI structure. As can be seen from the figure, the horizontal seismic response decreases in the SSSI analysis results. In general, small-sized buildings have more SSSI effects than larger ones, while large building has few effect on SSSI

3. Conclusions

In this study, we examined the research trends of SSSI in domestic and overseas and found that SSSI effect should be reflected according to SRP 3.7.2. And that there are limitations on the analysis of the SSSI due to the problems of the vast analysis data and the analysis time.

Also, the simplified analysis model of the nuclear facility was discretized and the parametric analysis was performed. Since the influence of the parameters on the SSSI analysis is clearly examined, and the future research will develop a finite three - dimensional finite element model of the NPP and carry out further studies considering various ground conditions.

REFERENCES

- [1] NUREG-0800, Standard Review Plan, Section 3.7.2, 'Seismic System Analysis', Rev4, U.S. Nuclear Regulatory Commission, 2013.
- [2] GE-Hitachi Nuclear Energy Americas LLC, Control Building and Firewater Service Complex Seismic Structure-Soil-Structure Interaction Analysis, Technical Report, 2015.
- [3] MCEER 'Site Response, Soil-Structure Interaction and Structure-Soil-Structure Interaction for Performance Assessment of Buildings and Nuclear Structures', Technical Report, 2011.
- [4] C.G. Seo, J.M. Kim, Introduction to KIESSI program for soil-structure interaction, COSEIK, V25, 2012.
- [5] Farhang Ostadan, Nan Deng, A System for Analysis Soil-Structure Interaction, SASSI2010 User Manual, 2012.

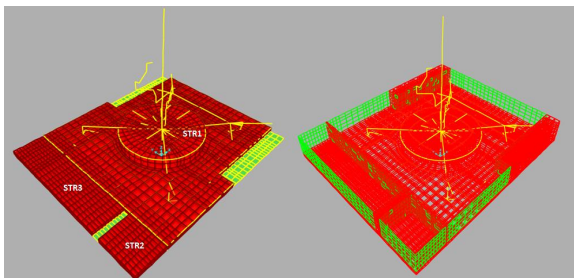


Fig. 1. Simplified numerical models of nuclear power plant for structure-soil-structure interaction.

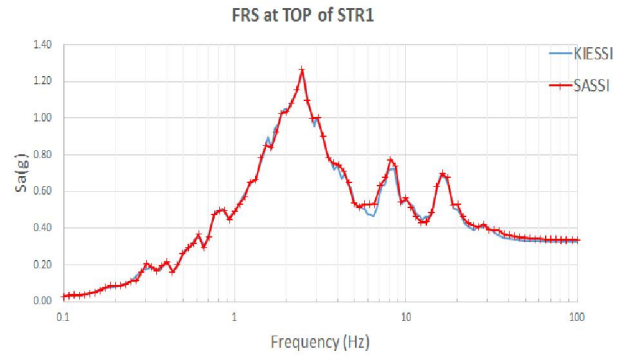


Fig. 2. Comparison of result from CNU-KIESSI & SASSI2010 (Floor Response Spectrum at the foundation of reactor building)

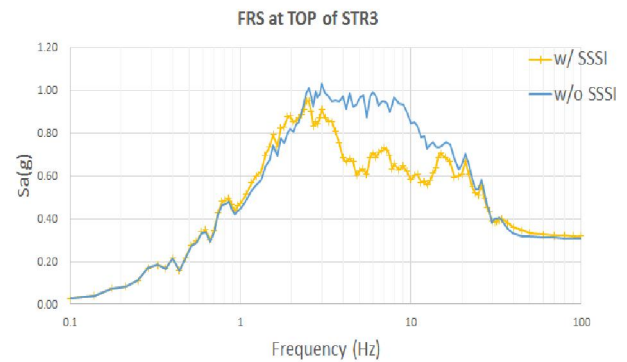


Fig. 3. Floor response spectrum of a STR3 foundation considering SSI and SSSI of adjacent structures on the ground surface