

## CFD-aided Estimation of the Natural Circulation Flow Rate in External Reactor Vessel Cooling via 1-D Simulation Using MARS-KS

Min Seop Song<sup>a</sup>, Eung Soo Kim<sup>a</sup>, Il Woong Park<sup>b</sup>, Yeon-Gun Lee<sup>c\*</sup>

<sup>a</sup>Department of Nuclear Engineering, Seoul National University

<sup>b</sup>Institute for Nuclear Science and Technology, Jeju National University

<sup>c</sup>Department of Nuclear and Energy Engineering, Jeju National University

\*Corresponding author: yeongun2@jejunu.ac.kr

### 1. Introduction

The external reactor vessel cooling (ERVC) is the severe accident management strategy adopted by the domestic power reactor APR1400 to retain and stabilize the molten core debris inside the reactor vessel as illustrated in Fig. 1. In a thermal-hydraulic view point, the thermal margin of ERVC is mainly determined by the critical heat flux (CHF) on the lower head of the reactor vessel. Given that the mass flux is one of the most crucial factors on the CHF, the natural circulation flow rate established around the reactor vessel and the insulation is closely associated with the thermal margin of ERVC.

While the system analysis code such as MARS-KS can provide robust predictions on most two-phase flow problems, its calculation result of a natural circulation flow may vary substantially relying on the way of user's modelling since the natural circulation is in general driven by very small pressure differences. On the other hand, commercial CFD codes have a higher fidelity in simulating the single-phase flow in channels with the complicated geometry, whereas its accuracy in the two-phase flow condition needs to be assessed.

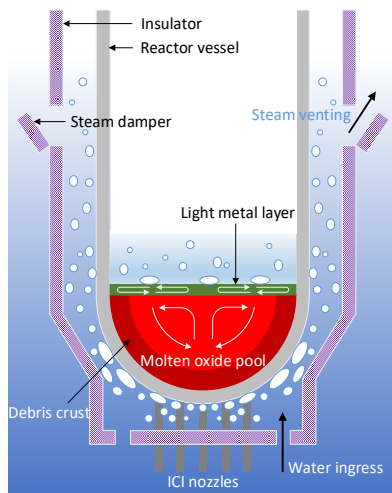


Fig. 1. Concept of in-vessel retention by means of ERVC

In this study, the natural circulation flow circuit of ERVC of APR1400 was modelled via the ANSYS-CFX code. Then the loss coefficient at dominant minor loss points in MARS-KS inputs was estimated based on the difference in the pressure drop between two codes

before significant void generation. With applying the obtained loss coefficients in the single-phase liquid state, the evolution of thermal-hydraulic variables to the two-phase natural circulation flow conditions was simulated with the MARS-KS code.

### 2. CFD analysis

The flow channels of ERVC established between the reactor vessel, the insulation, and the reactor cavity wall were modelled as shown in Fig. 2. For computational efficiency, one fourth of the reactor vessel and other sections were drawn azimuthally. A total of 587,000 meshes were generated for the fluid volume.

The heat flux distribution on the lower head by the core melt was implemented as the boundary condition. And the reference pressure was set to 3.75 atm so that the fluid pressure at the top equals to the predetermined reactor containment pressure, 3.0 bar.

The heat transfer across the solid part and the natural circulation of the cooling water were calculated with ANSYS-CFX 17. The Shear Stress Transport (SST) model was applied as the turbulence model, and the Boussinesq model was chosen in evaluating the buoyance force in natural circulation flows caused by the density gradient.

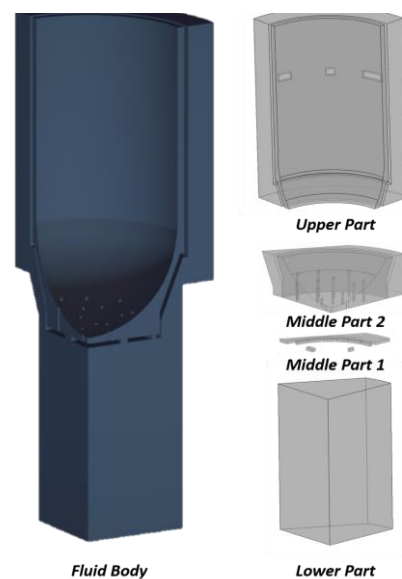
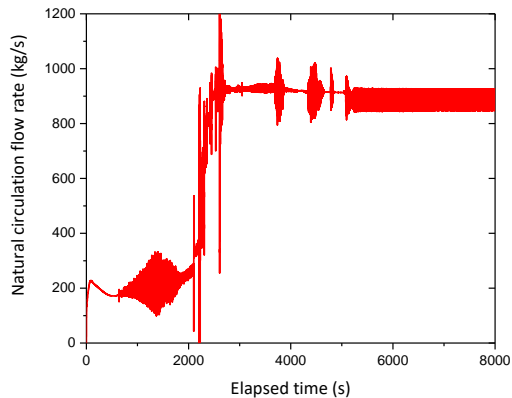


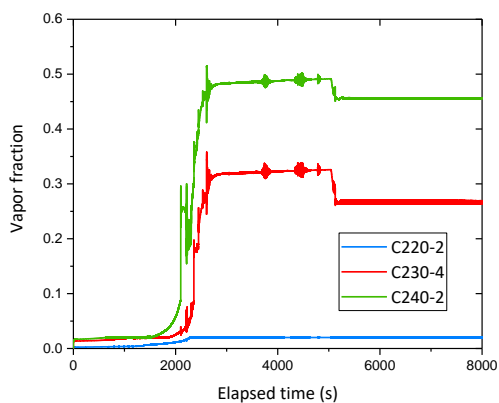
Fig. 2. Natural circulation flow channels around the reactor vessel modelled for CFD simulations



significant vapor bubbles were generated, the transition into the two-phase flow regime occurred at about 2,100 sec. Then, the natural circulation flow rate increases drastically as shown in Fig. 5(a). The mass flow rate exhibits oscillatory behavior in time, but its mean value was sustained at around 890 kg/s, which corresponds to the flow velocity of 0.53 m/s through the ingress door. The evolution of other thermal-hydraulic variables will be discussed in detail at the conference.



(a) Mass flow rate



(b) Vapor fraction around the lower head

Fig. 5. MARS-KS calculation results of two-phase natural circulation flow during ERVC

Presented in Fig. 6 is the heat transfer mode evaluated by the MARS-KS code for the exterior surface of the upper section of the lower head, to which the maximum heat load is applied. It was revealed that, over the entire transient, the subcooled nucleate boiling regime was sustained by the two-phase natural circulation flow through the annular gap between the reactor vessel and the insulation. However, this problem has to be further investigated since the proper critical heat flux model for h is not implemented yet into the MARS-KS code; one needs to note that the value of the critical heat flux serves as a decisive factor in the logic for selection of heat transfer modes in the MARS-KS code.

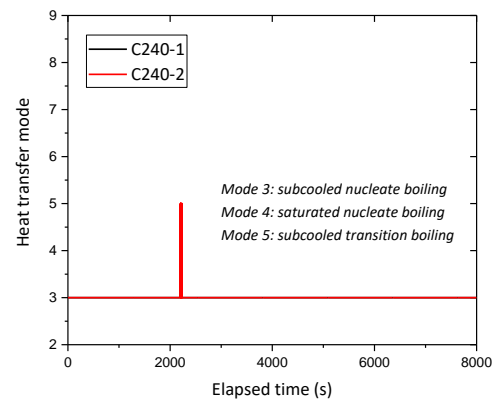


Fig. 6. Heat transfer mode on the lower head surface

#### 4. Conclusions

The CFD-aided estimation of the natural circulation flow rate in ERVC was carried out via 1-D simulation using the MARS-KS code. This system analysis model on ERVC of APR1400 was developed for coupling with the smoothed-particle hydrodynamics (SPH) code, SOPHIA [3], to provide a new analysis method for in-vessel retention of the molten-core debris. Based on the meshless method, this SPH model simulates natural convection of the molten core and calculates imposed head loads without relying on empirical correlations. As a next step, the experimental database or the empirical correlation of the critical heat flux on a downward-facing hemisphere will be implemented into MARS-KS to better predict the thermal margin of the ERVC.

#### Acknowledgement

This work was supported by the Nuclear Safety Research Program through the Korea Foundation Of Nuclear Safety(KoFONS) using the financial resource granted by the Nuclear Safety and Security Commission (NSSC) of the Republic of Korea. (No. 1903003)

#### REFERENCES

- [1] J. Kim et al., Spray effect on the behavior of hydrogen during severe accidents by a loss-of-coolant in the APR1400 containment, *International Communications in Heat and Mass Transfer*, Vol. 33, pp.1207-1216, 2006
- [2] R. J. Park et al., Detailed evaluation of natural circulation mass flow rate in the annular gap between the outer reactor vessel wall and insulation under IVR-ERVC, *Annals of Nuclear Energy*, Vol. 89, pp. 50-55, 2016
- [3] Y. B. Jo et al., SOPHIA: Development of Lagrangian-based CFD code for nuclear thermal-hydraulics and safety applications, *Annals of Nuclear Energy*, Vol. 124, pp. 132-149. 2019