

# Endeavors for Resilience in Safeguards Implementation in 2020

KNS Autumn Meeting 2021

DONG-HYUK, LIM



# CONTENTS

---

1. Introduction

2. COVID-19 Response in ROK

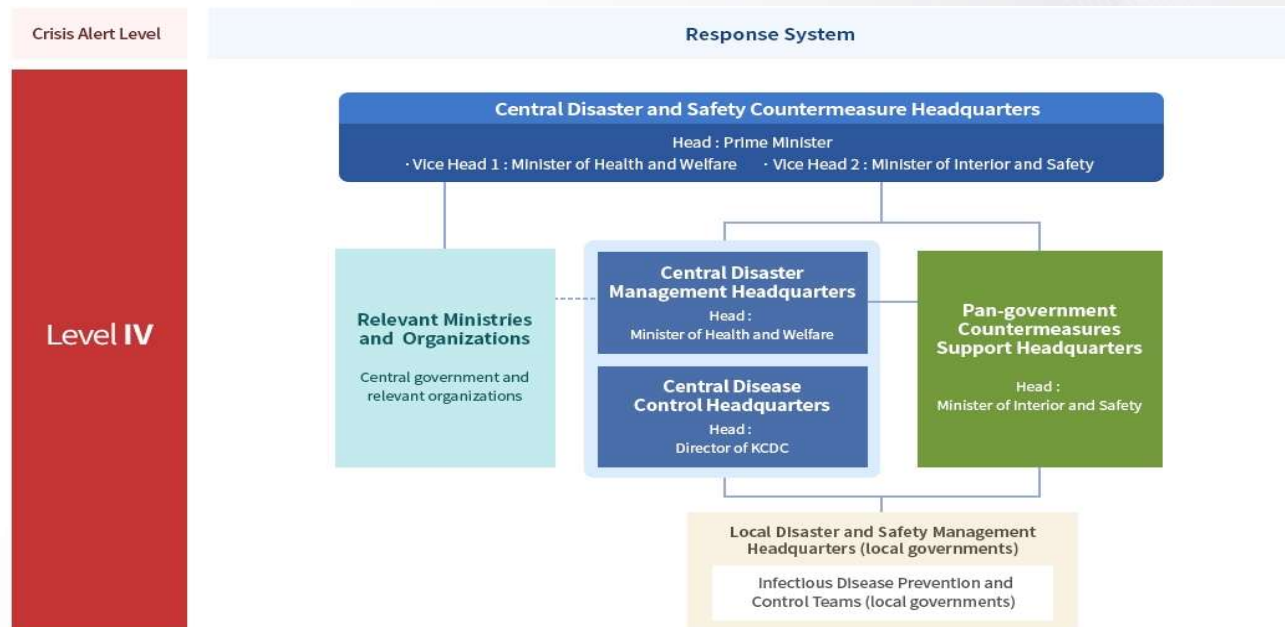
3. Safeguards Implementation under COVID-19 in 2020

4. Conclusions



- **Declared COVID-19 a global pandemic on March 11, 2020.**
  
- **We are experiencing**
  - significant changes in our lives from this unprecedented pandemic
  - including growing global economy damages, policy changes and travel restrictions worldwide, and more
  
- **We are establishing new orders against COVID-19**
  - this has led to the changes in IAEA safeguards and material accounting of IAEA Member States
  
- **The IAEA and Member States continuously have devoted their efforts to minimize restraints in verification activities and successfully conduct the activities**

## ➤ Korean government's response system



- Striving to curb the spread in all areas since raising the country's Crisis Alert Level to the highest (Level 4) in Feb.23, 2020.
- Control Tower : KCDC(Korea Centers for Disease Control & Prevention)

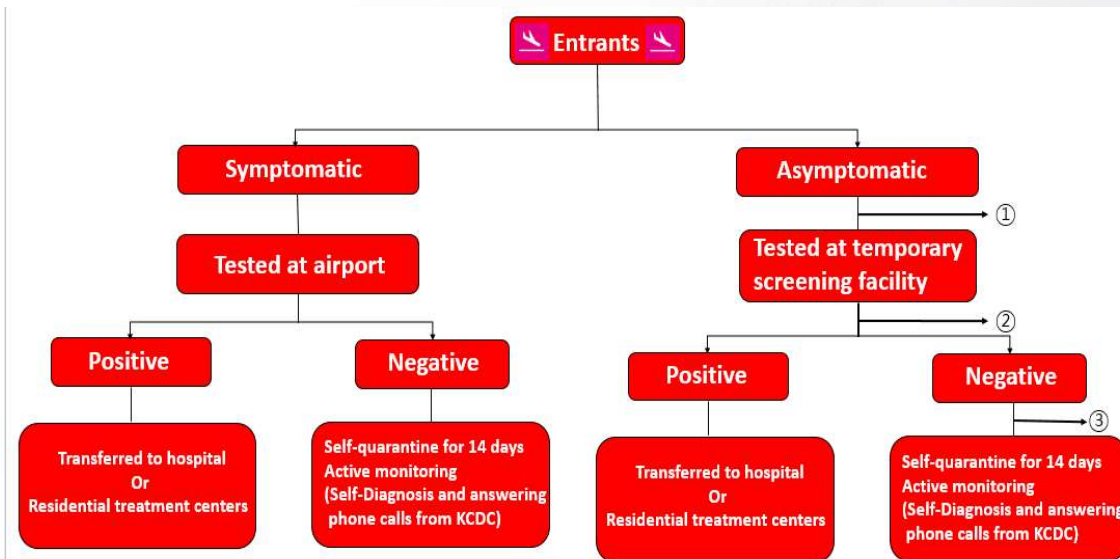
## Entry Procedure for the IAEA Inspectors

- **Special Entry Procedure; All inbound travelers (Korean & foreigners)**
  - Submit PCR test results within 72 hours as of departure day
  - Receive temperature screening & fill out the Health Questionnaire
  - Allowed after their contact information and address of residence in ROK is verified
  - Required to install "Self-Diagnosis App" on their phones to check if they show any COVID-19 symptoms on a daily basis for 14 days
- **Stronger measures for infection prevention and control of overseas entrants**
  - **All travelers** -> Subject to a 14-day quarantine from the day after arrival
  - **Symptomatic** -> Travelers who test positive for COVID-19 will be transferred to a hospital or residential treatment Center
  - **Asymptomatic** -> ① Diagnostic tests at temporary screening facilities ② go to their destination after receiving negative ③ active surveillance for 14 days through the Self-Diagnosis App and phone calls from KCDC

## Entry Procedure for the IAEA Inspectors

### ➤ Authorization (A2 Visa) when the IAEA inspectors enter the ROK

- For verification efficiency, through consultation between the Ministry of Foreign Affairs and the IAEA
- Exemption from quarantine in case of test negative
- Subject to active monitoring for 14 days through "Self-Diagnosis App" of the Ministry of Health and Welfare

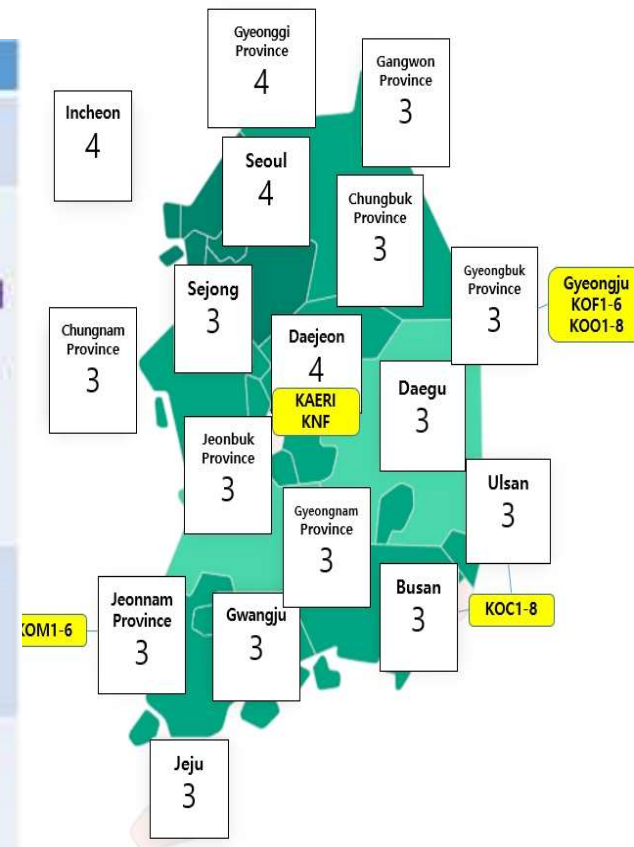


- ① : All foreigners must move to a temporary screening
- ② : Upon arrival at the facility, COVID-19 test is performed and get a result after 8 hrs.
- ③ : After receiving negative, travelers can go to their destination

## Social Distancing Levels

### ➤ New social distancing levels from July 1, 2021

	Level 1	Level 2	Level 3	Level 4
Private Gatherings	- Not Specified	- Up to 8 persons	- Up to 4 persons	- Up to 2 persons
Publicly Used Facilities	- Not Specified	- Reducing usage rate - Entertainment facilities, etc., singing rooms, restaurants and cafes limited to 24:00	- Entertainment facilities, etc., singing rooms, restaurants, cafes and public bath businesses restricted to 22:00	- Expanding 22:00 restriction - Gatherings banned at dance clubs, nightclubs, dance pubs and street cart bars
Events	- Events of 500 people or more need to report in advance	- Events of 100 people or more prohibited	- Events of 50 people or more prohibited	- Events banned
Assemblies	- Assemblies of 500 people or more prohibited			- Prohibited except one-person protest



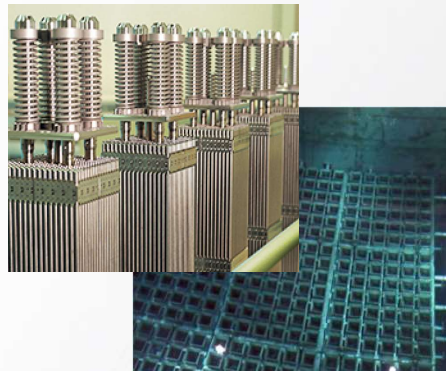
# Current status of Nuclear Facilities in ROK



## Target Facilities



- 28 Nuclear Facilities
- 44 MBA



## Nuclear Material



- 11,300 ton LEU
- 10,109 ton NU
- 119 ton Pu
- 95% in Commercial Rx.



## small quantity nuclear material



- 268 Companies
- Total 53 ton DU



## Support for the IAEA Inspections

- ▶ Prepared the Information Package to comply with travel and quarantine regulation for IAEA inspectors
- ▶ Considerable assistance for IAEA inspectors in conducting safeguards activities in the ROK
- ▶ Updated each time there is a change in the national quarantine policy
  - ▶ Regularly in contact with various authorities such as the Korea Disease Control and Prevention Agency, the Ministry of Health and Welfare, the Ministry of Foreign Affairs, temporary COVID-19 testing facilities, airport quarantine station, nuclear facilities.

**Expressed the gratitude several times during meetings with IAEA SGOA3**

## Support for the IAEA Inspections

### ▶ Provided the Information Package since Feb. 2020.

#### ▶ Main Contents

- ▶ Gov't changing policy on the entry process
- ▶ Infectious disease prevention and control measures
- ▶ Nuclear facility access process, SGs contact list, etc.

- ▶ Updated (29 times) whenever national response policy changed and provided

### ▶ Retaining an immediate channel of consultation with the IAEA

- ▶ In the event of changes in nuclear facility and national policies
- ▶ NSSC(Nuclear Safety & Security Commission) ↔ IAEA SGOA3

### ▶ Collaborated closely with the domestic nuclear facilities

- ▶ Reschedule of the operation, revising access procedure for inspectors, immediately reporting the status of facilities, etc.

# 03

## Safeguards Implementation under COVID-19 in 2020 Information Package

### The guideline for entrants to ROK.

**For Entrants to Korea  
Guidelines for  
COVID-19 Infection Prevention**

\*Due to the recent COVID-19 global pandemic, all persons entering the Republic of Korea are advised to follow the following instructions to prevent infection and/or transmission.

**Major Symptoms of COVID-19**

- Fever (37.5°C or above)
- Respiratory symptoms (e.g. coughs, sore throat, muscle pains, difficulty breathing)

**Personal hygiene measures**

- Wash your hands for at least 30 seconds under running water.
- Do not touch your eyes, nose, or lips with your hands before washing them.
- Fully cover your mouth and nose with your arm sleeve when coughing.
- Wear a face mask when visiting medical providers, or at all times if you have fever or respiratory symptoms.
- Ventilate your indoor spaces frequently.

**How to use the mobile self-check app**

- Install the Self Health Check mobile app as per the Special Entry Procedure.
- Enter your health status on this app everyday for the next 14 days.

\*If you show symptoms for two consecutive days, your local public health center will contact you by phone to check your health condition.

How to use the mobile self-check app  
<http://kocor.mohw.go.kr/selfcheck/>

**\*Follow the instructions of healthcare professionals and public health authorities at all times.**

※ In accordance with paragraph 5 of Article 76-2 of the Infectious Disease Control and Prevention Act, the records of your overseas travel will be delivered to medical institutions to provide information for medical diagnosis and treatment.

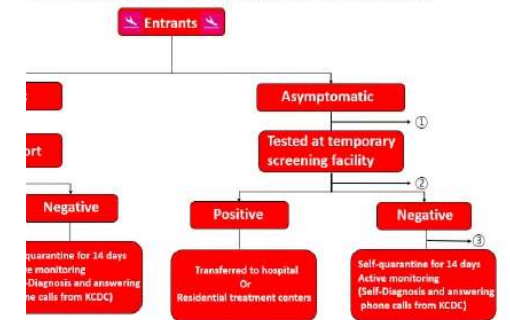
### Guideline regarding KCDC call

- Regarding KCDC call, KCDC usually call every day for **14 days**. If you fail answering the call, KCDC can try several times during a day to contact you. If you continuously fail to receiving the KCDC call, let KINAC or NSSC(Ms. SON) know to help you. (Please note the ROK contact list number as follows).
- When arriving in ROK, it is recommended to test and confirm that the phone number given to KCDC is working well.
- When at a facility accompanied by a KINAC inspector, it can be helpful to keep that inspector know any KCDC enquiries or failing answering the KCDC calls for several days.
- Please note that receiving calls is also continued on weekends. KCDC will also call to you on weekend to check your health state.
- Note: Most of all your safety is first priority. You don't have to take your safety risk in trying to receive KCDC calls, such as answering calls when you are driving.

### Guideline regarding the variant of COVID-19 in the UK

- Currently, ROK has been strengthening COVID-19 response system for overseas entrants to prevent the spread of the variant of COVID-19 since Dec. in 2020.
- COVID-19 test before releasing quarantine for all inbound travelers, suspension of flights from the UK ('20.12.23. ~ '21.01.07.) strengthened fever standards for inbound travelers (37.5°C -> 37.3°C), restrictions on visa issuance, mandatory submission of PCR test result "Negative".
- Starting Jan. 8<sup>th</sup>,
- Foreign arrivals must have been a negative COVID-19 test taken within 72 hours before their departure to ROK.
- ROK will extend the suspension of flights from the UK by 2 weeks (1.8. ~ 21.)
- Even if the PCR test result "Negative" has been submitted for all entrants from the UK and South Africa (both domestic and foreign), COVID-19 test must be carried out at the temporary screening facilities. And you need to be quarantined at the temporary screening facilities until you get the test result "Negative".
- In addition, if the PCR test result is not submitted when you arrived at the airport, all foreigners will be prohibited entering the ROK regardless of their length of stay.

### Procedures for inbound travelers (from 00:00, Nov. 23)



must move to a temporary screening facility (hotel) by provided. It takes approx. 0.5-1 hour to facility.

at the facility, COVID-19 test is performed. You can get a So, you can stay for a minimum of 8 hours and a maximum

lected just three times a day at 10 am, 02 pm and 10pm. sult at 6 pm, 10 pm and next day by phone call.

is at the temporary screening facility between 2 pm and results the next day. -> You must stay overnight!

ves at the facility between 10 am and 2 pm can get the > You can leave the facility or stay overnight!

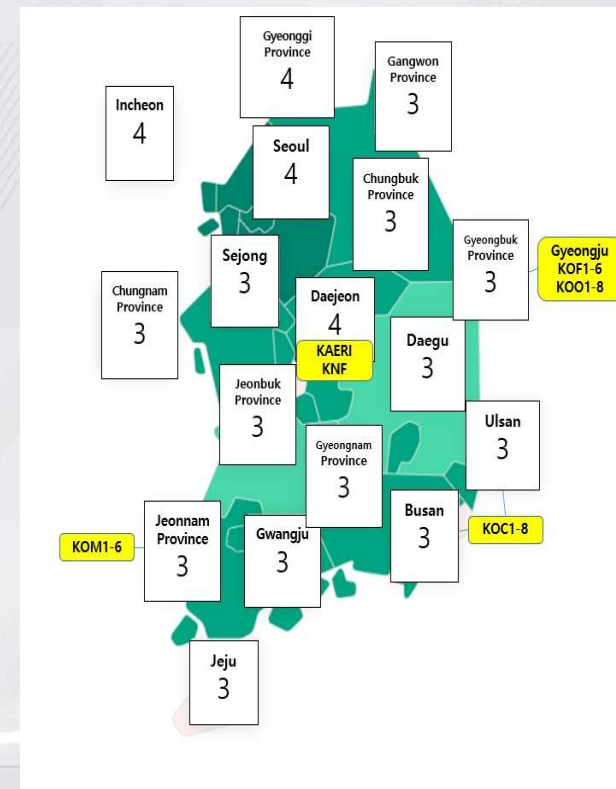
as at the facility before 10 am can get the results at 6 pm he facility or stay overnight!

egative, you can go to your destination where, facility ortation to Seoul station, terminal for free.

sible to stay overnight at the hotel for free if you want.

## Support for the IAEA Inspections

- Endeavored to prevent the possibility of spread of the virus By minimizing in-field visits by national inspectors
- Conducted field inspections (IAEA, National) by NPP Site-resident inspectors
- Given great helps in achieving 100% of the IAEA inspections by re-scheduling verification tasks.



## Support for the IAEA Inspections



### IAEA Safeguards Activities in 2020.

Facility	IAEA Inspection					CA					Total
	KHNP	KAERI	KNF	기타	Total	KHNP	KAERI	KNF	기타	Total	
<b>Times</b>	63	16	14	2	<b>95</b>	1	5	1	2	<b>9</b>	<b>104</b>

- Including UI and PIV, etc. for which a total of 289 PDIs
- Conducted 9 Complementary Accesses (Cas)
- Got "Satisfactory" on all IAEA inspections from IAEA HQ (SC)

### National Inspections in 2020.

Facility	IAEA Inspection				Total
	KHNP	KAERI	KORAD	Small-quantity Company	
<b>Times</b>	21	5	2	8	<b>36</b>

- Performed total 36 national inspections by KINAC





- ▶ Despite the unprecedented condition, these efforts allowed the Republic of Korea to perform national inspection and IAEA inspections on nuclear facilities in time
- ▶ Received a “Satisfactory” on the all activities through the Secure Communication(CA) from IAEA after COVID-19 outbreak
- ▶ Demonstrated its nuclear transparency in the international community through rapid response and material accounting
- ▶ The Republic of Korea will comply with quarantine guidelines in response to the prolonged COVID-19 in 2021 and actively support and make every utmost effort to carry out IAEA safeguards activities successfully

The background of the slide is a blue sky with white, fluffy clouds. A faint digital grid pattern is overlaid on the sky. In the upper left corner, there are some abstract digital elements, including a circular pattern of dots and lines, and some binary code (0s and 1s) scattered across the top. The text "Thank you very much!!" is centered in the middle of the slide in a bright yellow color.

**Thank you very much!!**